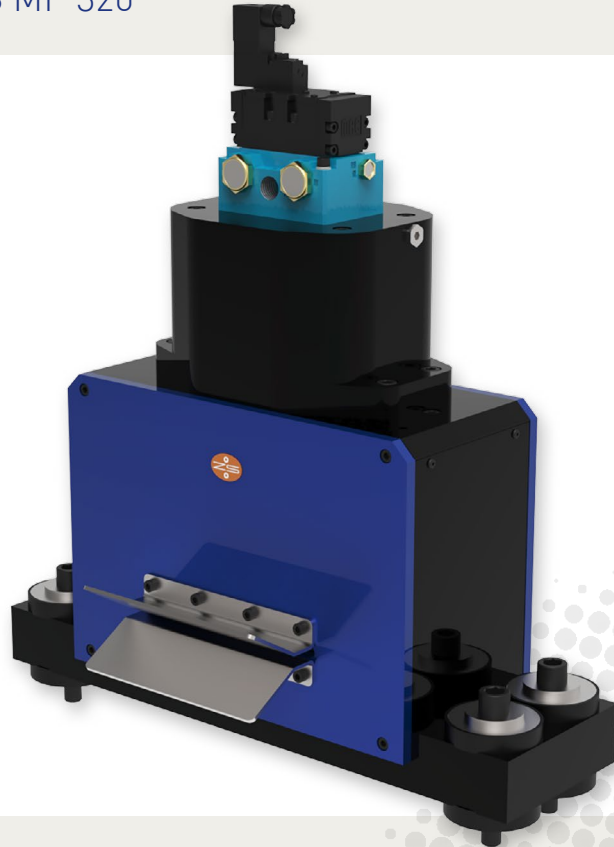


PNEUMATIC CUTTING SHEARS TS MP

Models: TS MP 160 | TS MP 320



POWERFULL SEPARATION

- Dynamic pneumatic impact system with solenoid valve 24 DC
- Knife made of special steel, regrindable
- Cutting force infinitely variable

PRECISE CUTTING

- Solid pillar guides with ball bushings
- Reversible cutter bar and useable twice
- Easier and preciser cutting gap setting
- Precision shears for cut to length application
- Optional holding device (recomm. for material thicknesses of less than 0.5 mm)

OPTIMIZED

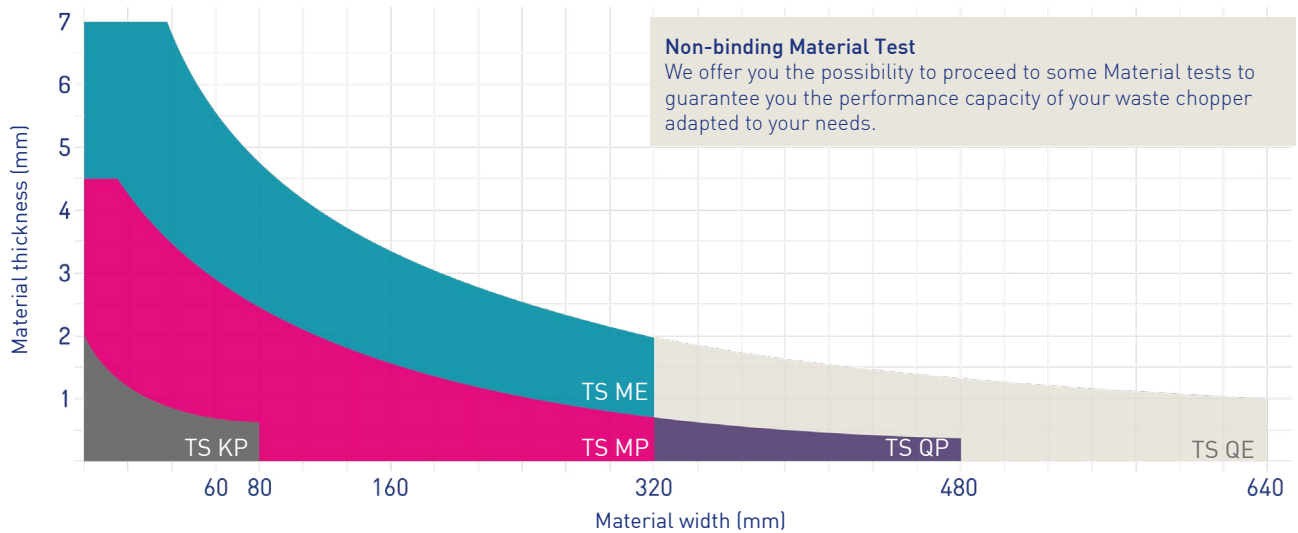
- Optional elimination of chopped waste thanks ameliorated outlet
- Optional access for cleaning and exchange cutter
- Optional sensors for position monitoring
- Steamer feet for absorbing vibration and noise



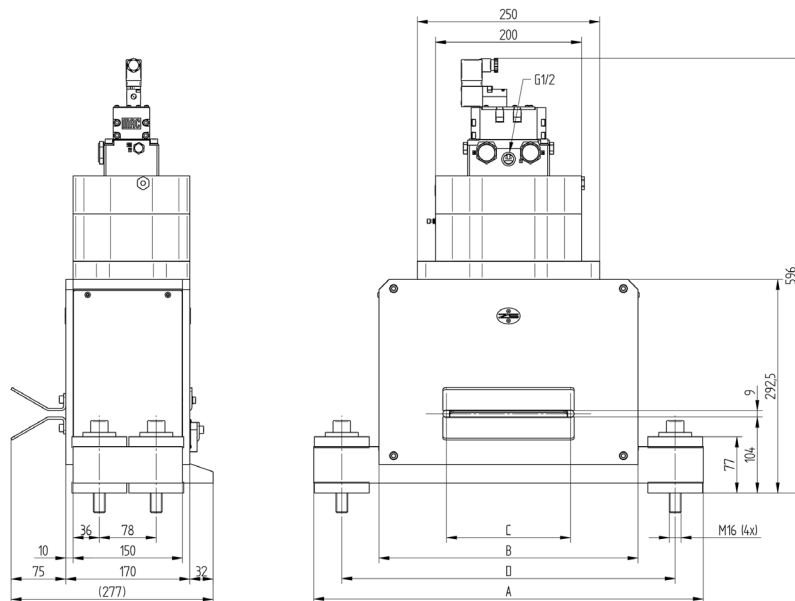
PNEUMATIC CUTTING SHEARS TS MP



PERFORMANCE



TECHNICAL SPECIFICATIONS



MODEL	TS MP	160	320
Cutting width max. (mm)		160	320
Support width A (mm)		534	714
Body width B (mm)		354	535
Opening width C (mm)		170	330
Mounting distance D (mm)		457	637
Material height max. (mm)			7
Cutting force max. (kN)			40
Air consumption per stroke at 8 bar approx. (l)			4.5
Cycle time (ms)		120	150
Weight (kg)		60	75

SWITZERLAND

Zehnder & Sommer AG
CH-3400 Burgdorf
info@zehndersommer.com
Tel +41 31 800 00 00

GERMANY

Zehnder & Sommer GmbH
DE-58452 Witten
info@zehndersommer.de
Tel +49 2302 981 60 30

zehndersommer.com
ZSswiss.com