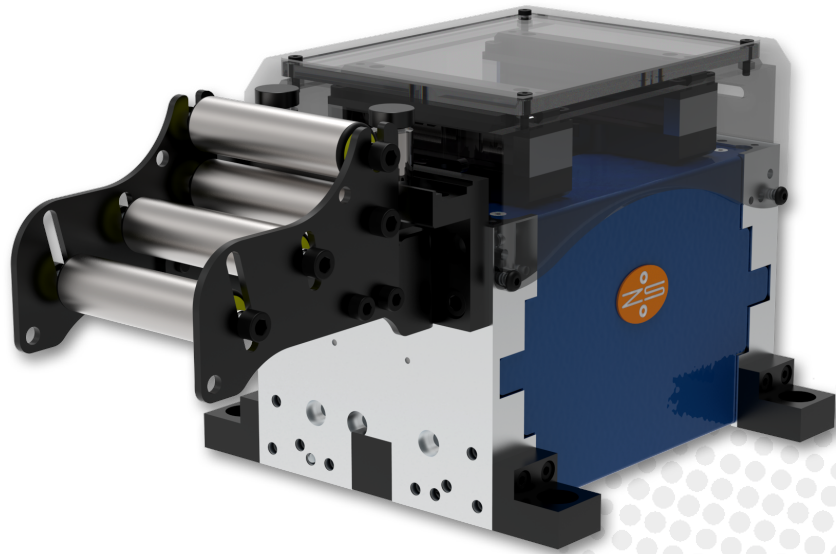




ELECTRICAL DOUBLE GRIPPER FEED EZ KX 080

Models: EZ KX-C 080 | EZ KX-D 080



ACCURATE

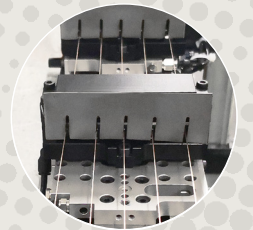
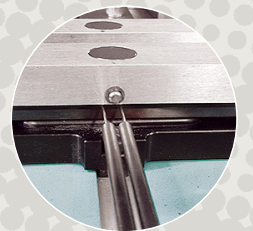
- Precision mechanics and high-tech materials for highest accuracy
- Double precision linear motor

VERSATILE INSTALLATION

- Compact design with minimal installation dimensions
- Available in 3 unit lengths: Compact (C), Double (D)
- Cable Connector Box: separate or on device
- Variable infeeds: basket with double rolls, inlet plate, wire inlet

VERSATILE USE

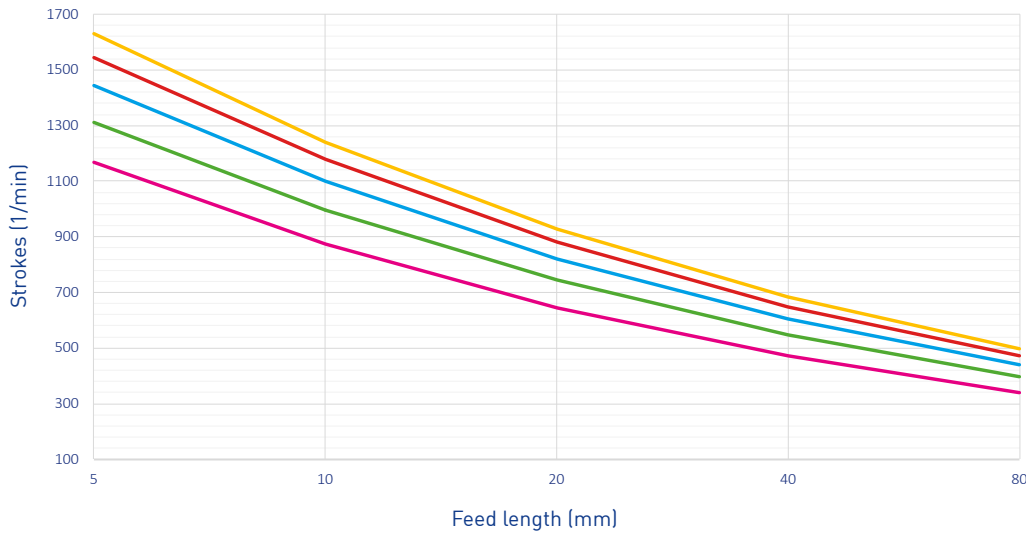
- Prepared for additional clamps, better wire guiding, considerable clamping force
- Various tailor made clamping, gripping and guiding options
- Good visibility into gripper chamber for easy threading
- Threading help button (material insertion without operating the control)
- Adaptable roll basket to fit material properties



ELECTRICAL DOUBLE GRIPPER FEED EZ KX 080



PERFORMANCE



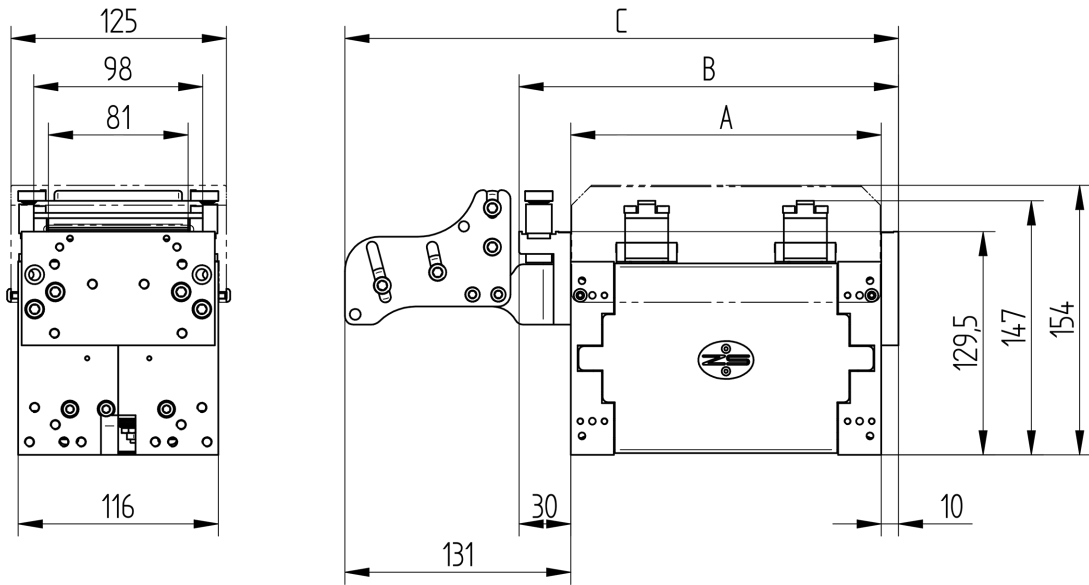
Performance curves (examples)*

Loop weight / Number of moving clamps

- 0 kg / 2 clamps
- 0.5 kg / 2 clamps
- 0.5 kg / 4 clamps
- 2 kg / 4 clamps
- 2 kg / 2 clamps

*Calculation basis: EZ KX-D 080
Optimum opening angle

TECHNICAL SPECIFICATIONS



| MODEL | EZ | KX-C 080 | KX-D 080 |
|--|----|-------------------------|------------|
| Bandwidth max. (mm) | | 80 | |
| Feed length max. (mm) | | 2x28 / 38 | 2x85 / 170 |
| A: Length basic unit (mm) | | 180 | 310 |
| B: Length with inlet plate (mm) | | 220 | 350 |
| C: Length with roll basket type D (mm) | | 321 | 451 |
| Clamp opening | | ca. 1 mm | |
| Genauigkeit (mm) | | +/- 0,03 | +/- 0,02 |
| Nominal traction force (N) | | 60 | 65 |
| Peak traction force, approx. (N) | | 100 | 140 |
| Clamping force at 6 bar | | 270 N | |
| Cross section (recommended) | | max. 50 mm ² | |

SWITZERLAND

Zehnder & Sommer AG
CH-3400 Burgdorf
info@zehndersommer.com
Tel +41 31 800 00 00

GERMANY

Zehnder & Sommer GmbH
DE-58452 Witten
info@zehndersommer.de
Tel +49 2302 981 60 30

zehndersommer.com
ZSswiss.com