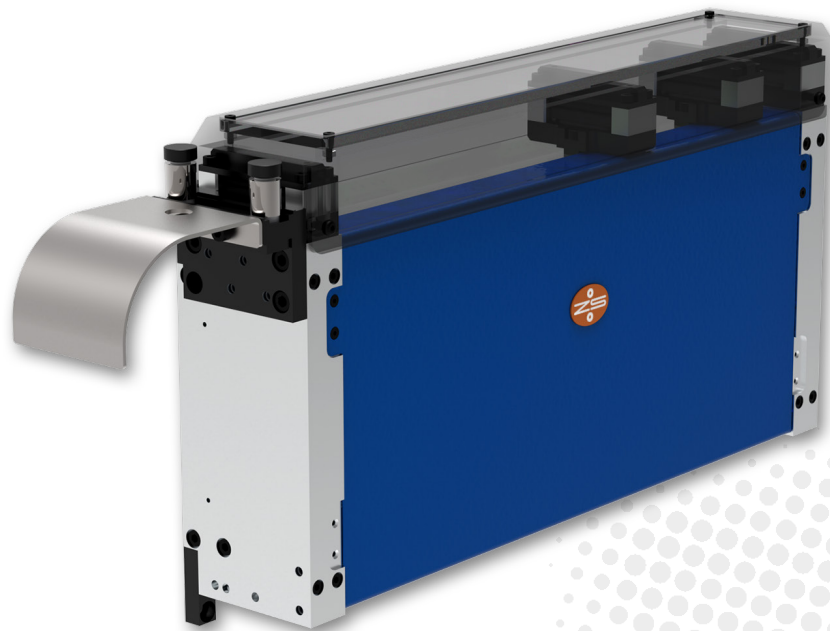


ELECTRICAL GRIPPER FEED EZ MV 080

Models: EZ MV-C 080 | EZ MV-D 080 | EZ MV-E 080



ACCURATE

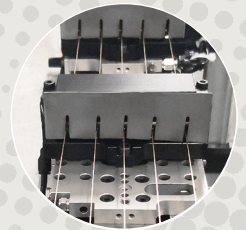
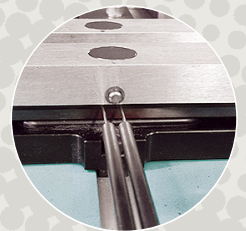
- Precision mechanics and high-tech materials for highest accuracy
- Powerful precision linear motor

VERSATILE INSTALLATION

- Compact vertical design with minimal installation width
- Available in 3 unit lengths: Compact (C)*, Double (D), Extended (E)
- Cable Connector Box: separate or on device (MVC)
- Variable infeeds: basket with double rolls, inlet plate, wire inlet

VERSATILE USE

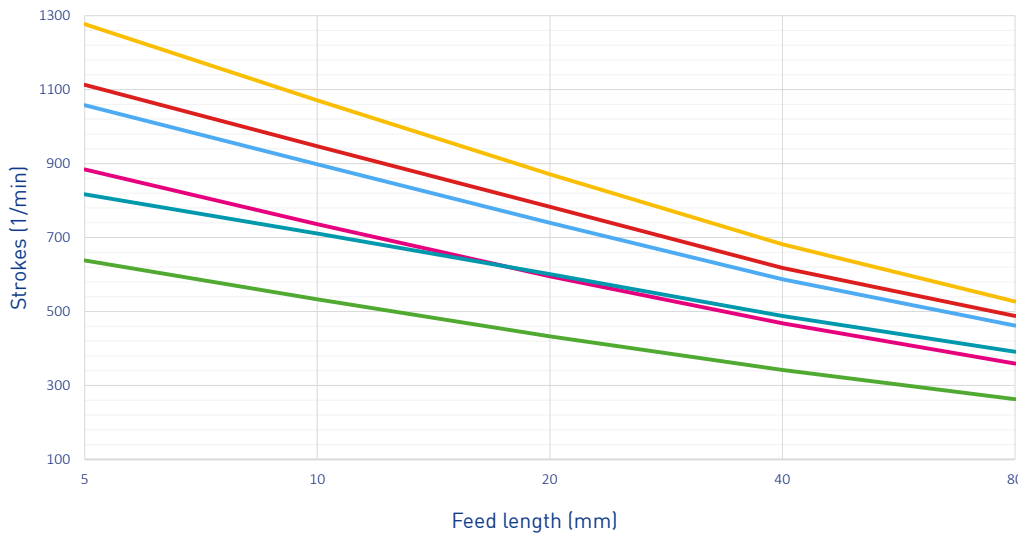
- Prepared for additional clamps, better wire guiding, considerable clamping force
- Various tailor made clamping, gripping and guiding options
- Good visibility into gripper chamber for easy threading
- Threading help button (material insertion without operating the control)
- Adaptable roll basket to fit material properties



ELECTRICAL GRIPPER FEED EZ MV 080



PERFORMANCE



Performance curves (examples)*

Loop / Number of moving clamps

0 kg / 1 clamp

0.5 kg / 1 clamp

2 kg / 1 clamp

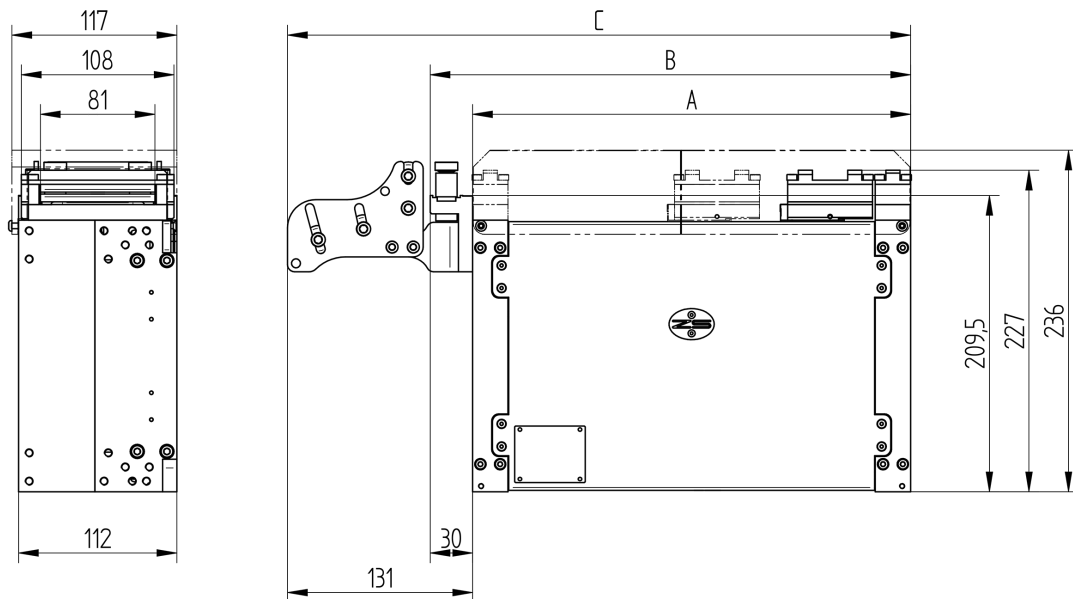
0.5 kg / 2 clamp

2 kg / 2 clamp

10 kg / 2 clamp

*Calculation basis: EZ MV-D 080
Optimum opening angle

TECHNICAL SPECIFICATIONS



MODEL	EZ	MV-C 080*	MV-D 080	MV-E 080
Bandwidth max. (mm)			80	
Feed length max. (mm)		45	102	176
A: Length basic unit (mm)		180	310	440
B: Length with inlet plate (mm)		210	340	470
C: Length with roll basket type D (mm)		311	441	571
Clamp opening		ca. 1 mm		
Accuracy (mm)		+/- 0,03	+/- 0,01	+/- 0,02
Nominal traction force (N)		180	220	220
Peak traction force, approx. (N)		300	450	450
Clamping force at 6 bar (movable gripper)		(1) 1100 N / (2, only MV-D, MV-E) 2200 N		
Cross section (recommended)		max. 200 mm ²		

*Only on special request

SWITZERLAND

Zehnder & Sommer AG
CH-3400 Burgdorf
info@zehndersommer.com
Tel +41 31 800 00 00

GERMANY

Zehnder & Sommer GmbH
DE-58452 Witten
info@zehndersommer.de
Tel +49 2302 981 60 30

zehndersommer.com
ZSswiss.com