

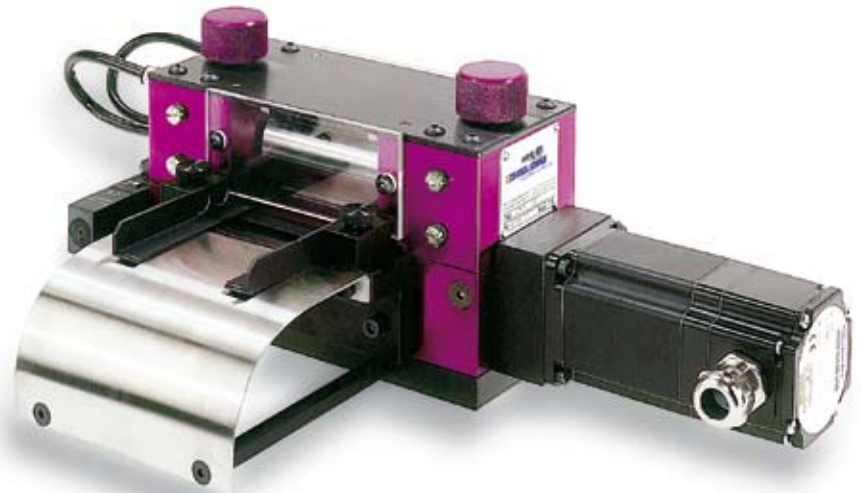
Electronic Roll Feeder

EVD 040-220 DG

50 mm² strip cross-section

(thumb-sized)

- Compact design
- Can be retrofitted to any press
- Service friendly
- 3-phase step motor
- Direct drive bottom roller
- Precision rubber rollers
- Rapid pneumatic pilot release
- Adjustable ventilation path
- Feed-in plate with strip guidance
- Machine can be used to push or pull



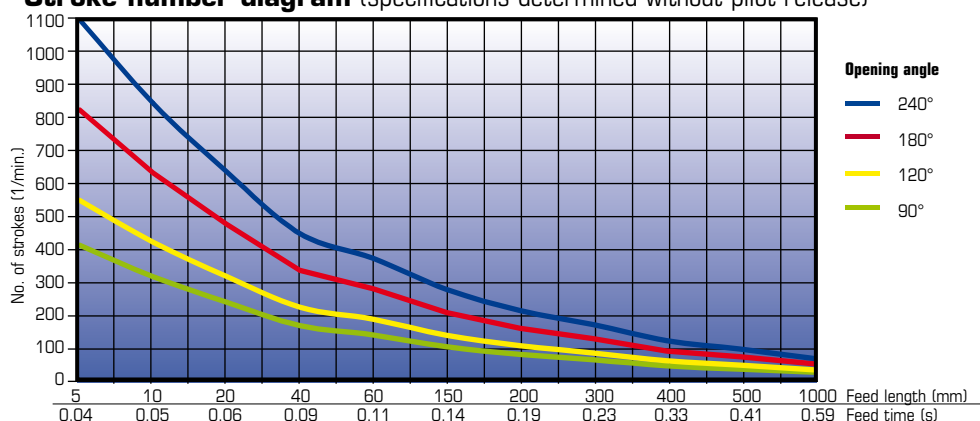
Options

- Rollers with special coating
- Steel or segment rollers
- Roller profile grinding
- Dual system (push and pull)
- Colour marking sensor
- Sensor for strip guidance monitoring

Technical data

Model	Strip width	Roller opening	Rollers	Feed length	Precision	Speed	Tractive force
EVD 040 DG	40 mm	max. 4 mm	ø 40 mm	0,1 – 19'999 mm	+/- 0,1 mm	max. 150 m/min	70 N
EVD 080 DG	80 mm						
EVD 120 DG	120 mm						
EVD 220 DG	220 mm						

Stroke number diagram (specifications determined without pilot release)



Technical modifications subject to change. Performance data depends on material.

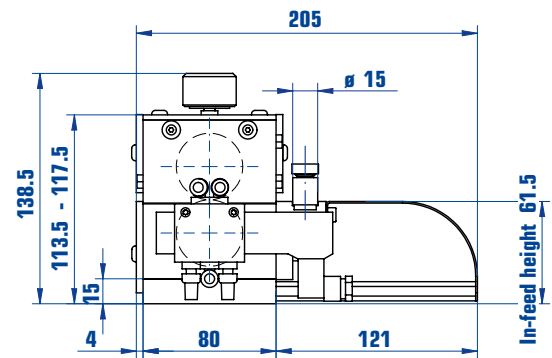
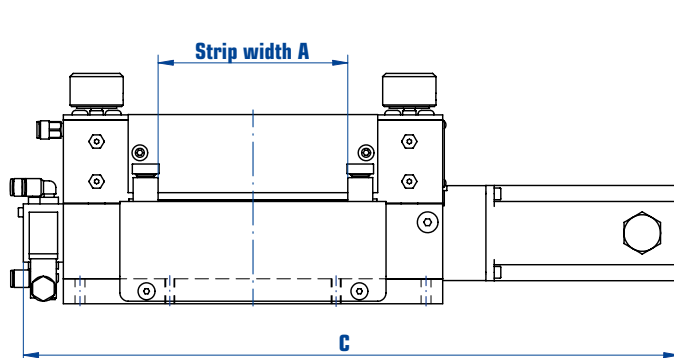
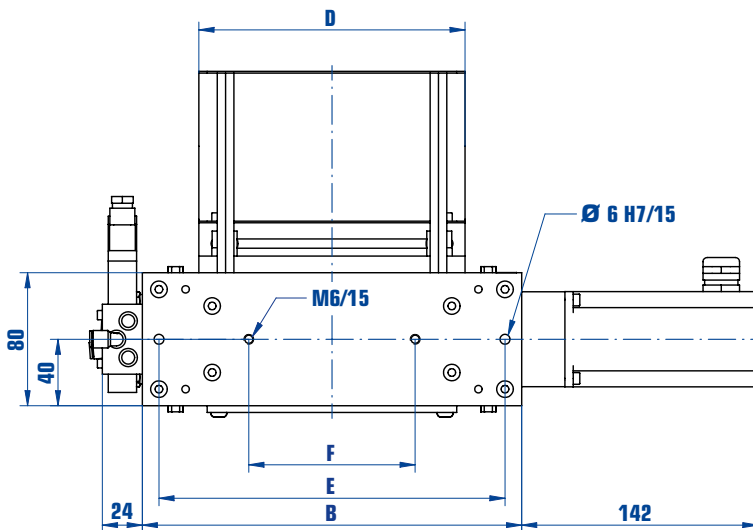
Compact CNC control system for roll feeders

- Easy coupling and retrofitting on any press
- Same operation for all types of feed
- Extremely easy to program and operate
- Operator panel with LCD display and hotkeys
- Profile speed adjustment based on selected number of strokes
- Up to 99 user programs can be stored in the control system
- Piece, partial quantity and auxiliary counters can be freely programmed
- Multiple sections can be programmed
- End of strip monitoring



Options

- Electronic cam shaft with 16 cams (8 dynamic)
- Data linking to superordinate computer via RS-232, Profibus or Ethernet
- PC software for external data maintenance and backup
- Tool protection
- Optoelectronic sensors for finding marks with software



Model	A	B	C	D	E	F
EVD 040 DG	40	148	314	80	128	100
EVD 080 DG	80	188	354	120	168	100
EVD 120 DG	120	228	394	160	208	100
EVD 220 DG	220	328	494	260	308	200

Technical modifications subject to change. Performance data depends on material.